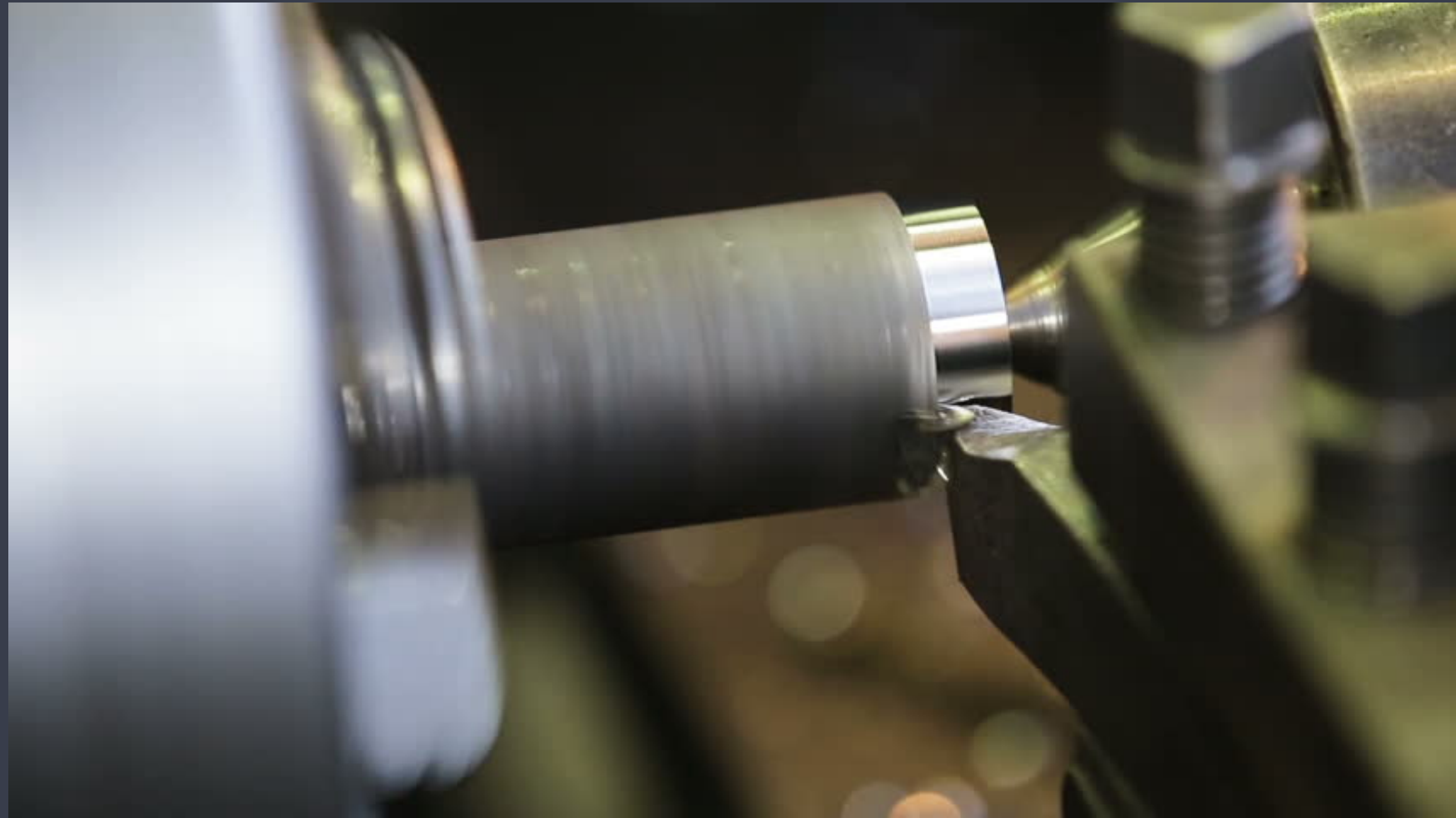


SWISS₊BLUE

STATUS – Dec. 2020





TURNING

TURNING LINE

CNMG

WNMG

DNMG

TNMG

TNUX

VNMG

CCMT

DCMT

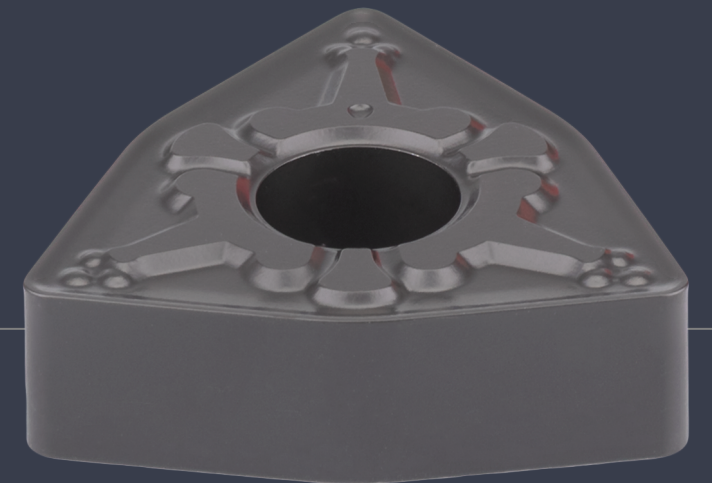
TCMT

VBMT

CNMA

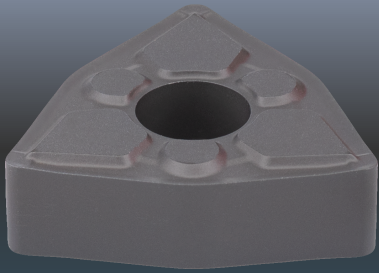
TNMA

WNMA



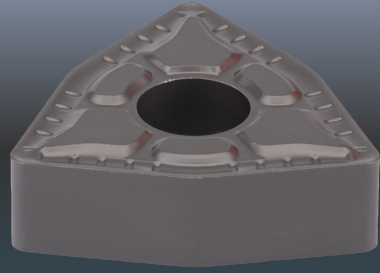
CHIP BREAKERS

PF



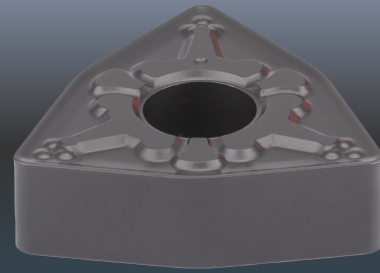
Finishing

PM



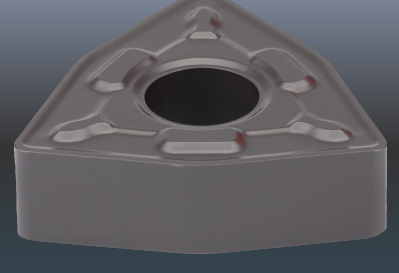
Semi-Finishing

(STD)



Mid Conditions

PR



Roughing

TURNING LINE - GRADES

UN 5030

BLUE
+ TECHNOLOGIES

- * Stainless
- * Roughing

CVD



UN 6020

BLUE
+ TECHNOLOGIES

- * General purpose

CVD



UN 7010

BLUE
+ TECHNOLOGIES

- * High hardness
- * Cast Iron

CVD



UN 110

BLUE
+ TECHNOLOGIES

- * General purpose
- * Positive Turning

PVD





MILLING

MILLING LINE

APMT

APKT

SPKN

SPKR

TPKN

TPKR

RPMT

RDMT

SEKT

SNMX

OFMT

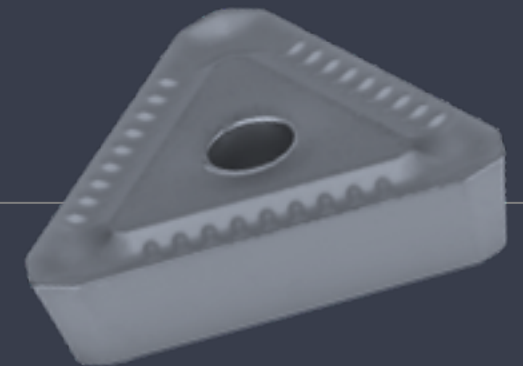
SEKN

SEKR

LNMU

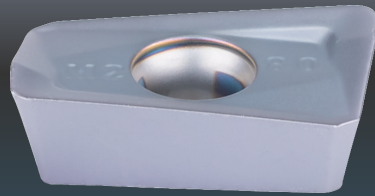
SDMT

WNMX



CHIP BREAKERS

PF



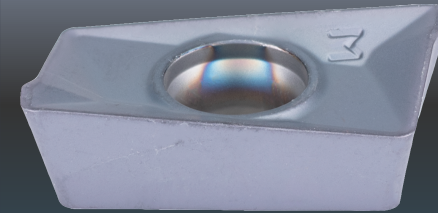
Finishing

PM



Semi-Finishing

(STD)



Mid Conditions

UN 330



General purpose

- * Steel
- * Stainless Steel
- * Cast Iron
- * Aerospace material

PVD



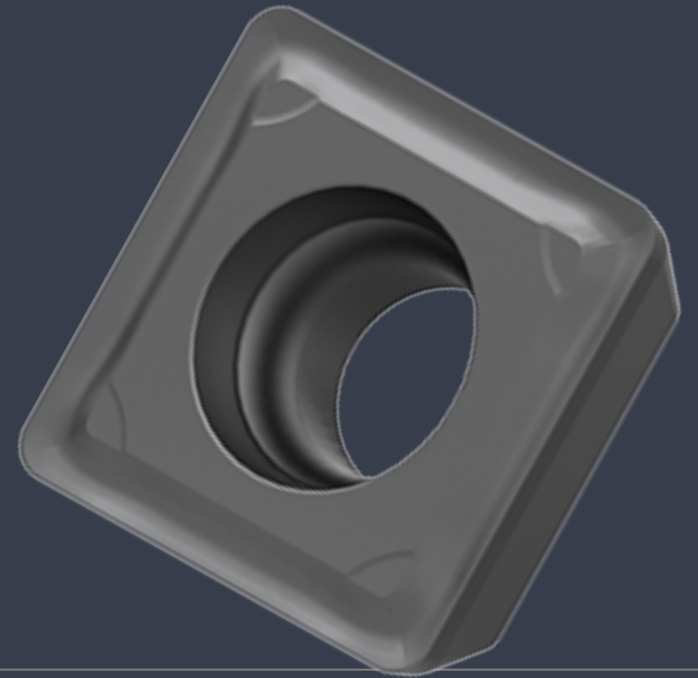


DRILLING

DRILLING LINE

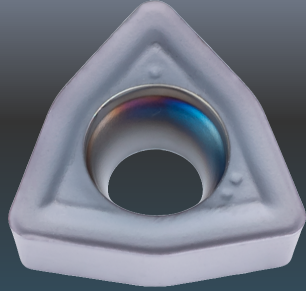
SPMG

WCMX



CHIP BREAKERS

PM



Semi-Finishing

PR



Roughing

UN 330



General purpose

- * Steel
- * Stainless Steel
- * Cast Iron



PVD